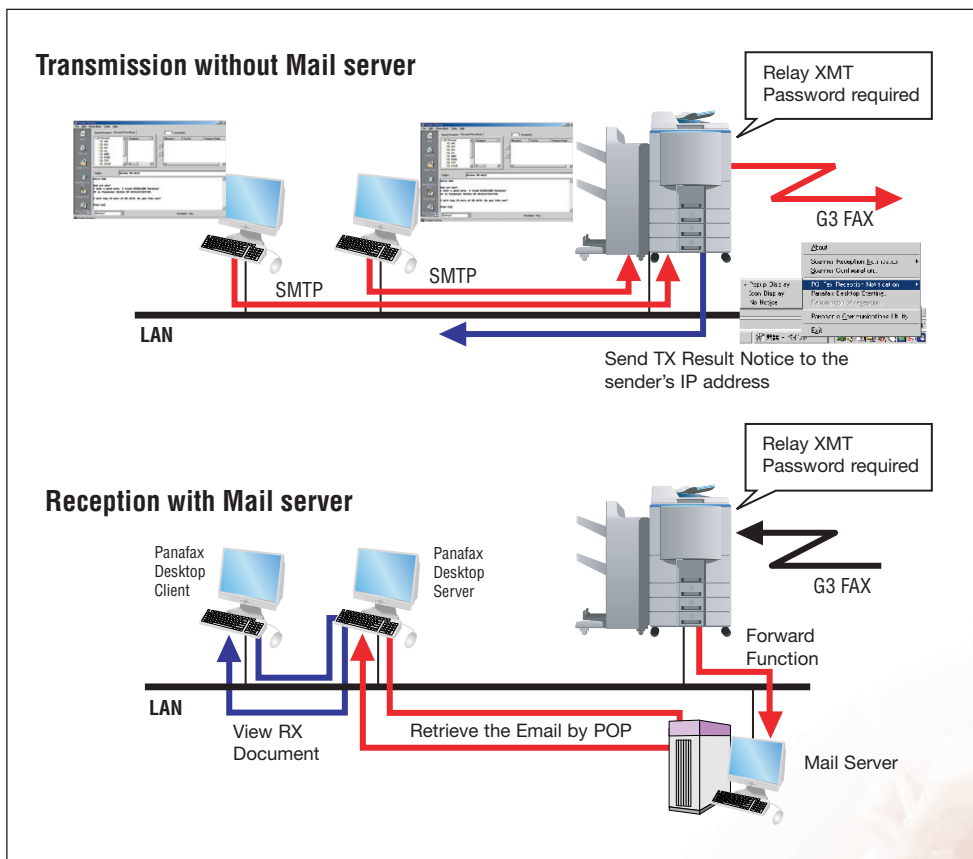


# Network PC Fax

## Panafax Desktop (Network Version)

Paperless Desktop Faxing via Network



### Highlights

- Sends faxes without using an email server for transmission (helps reduce LAN traffic)
- Send faxes from network PCs
- Save fax documents as digital data files
- Efficient transmission log management
- Reduces paper costs
- Shared transmission allows use of multiple machines for job splitting

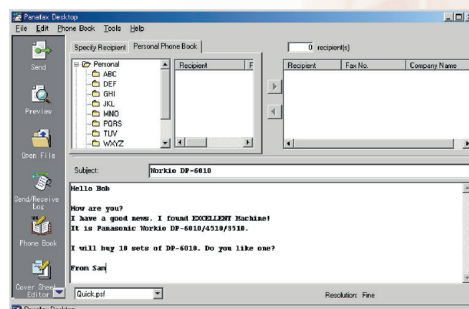
### "Panafax Desktop" PC-Fax Software

Included as standard with the WORKiO product, the Panasonic Document Management System software package features our exclusive "Panafax Desktop". This high-performance PC-Fax application can be used independently or in combination with the Panasonic Document Management System.

### Easy Operation on Your Desktop

"Panafax Desktop" makes it easy to send or receive a fax directly from your PC. There's no need to print out the document before faxing it. The faxing procedure itself is simple as could be. Specify the recipient by directly inputting the phone number or selecting from the phone book

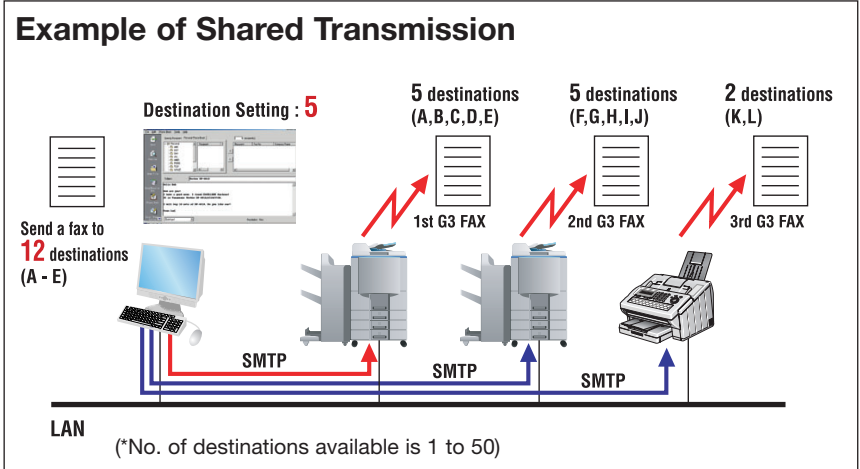
in the main screen, enter the Subject and Comment in the preview pane, then click the Send button. That's it. Your document will be transferred via the network, WORKiO, and PSTN line to the recipients fax machine.



- [Send] icon**  
Used to start the transmission.
- [Preview] icon**  
Used to view the cover sheet or transmission file.
- [Attach] icon**  
Used to select the file to be sent.
- [Send/Receive Log] icon**  
Used to show the Send/Receive Log Manager.
- [Phone Book] icon**  
Used to open your personal address book.
- [Cover Sheet Editor] icon**  
Used to create or edit a Cover Sheet.
- [Help] icon**  
Used to show the On-line help.

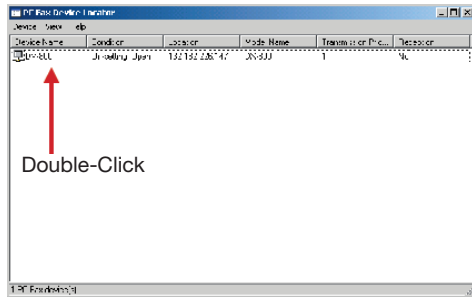
**Shared Transmission**

You can make your communications even faster and more efficient by using two or more faxes to simultaneously transfer the same document to multiple destinations. Instead of using one machine to transmit the same document consecutively to multiple destinations, you can split the job between two or more faxes. You can even do this automatically, simply by setting the maximum number of destinations with the Panafax Desktop on your PC. For example, if you have set the maximum number of destinations to 5, and you want to send a fax document to 12 destinations, the Panafax Desktop automatically splits the fax job into three and sends the documents using three devices (WORKIO). Shared transmission dramatically reduces the load on individual fax machines, speeds up document distribution, and optimizes communication efficiency.



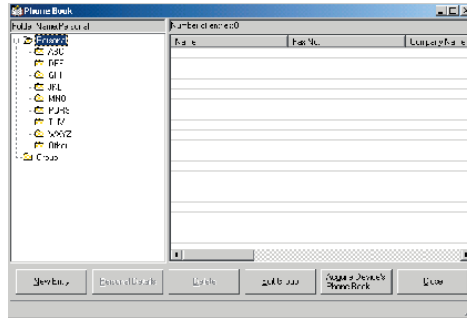
**Easy Setup via Network**

The PC-Fax Device Locator allows you to easily locate and setup fax devices on the network, directly from your PC. All you have to do to setup the fax is select the target device icon and double-click it to open the PC FAX properties. Set the various parameters according to your requirements.



**Panafax Desktop Phone Book**

Station names and phone numbers can be edited and stored on your PC. You can also import Address Book data from the fax device to your PC via network. You can even import or export your favorite phone book using CSV (comma separated value) file format.  
\* Max. number of Groups: 100

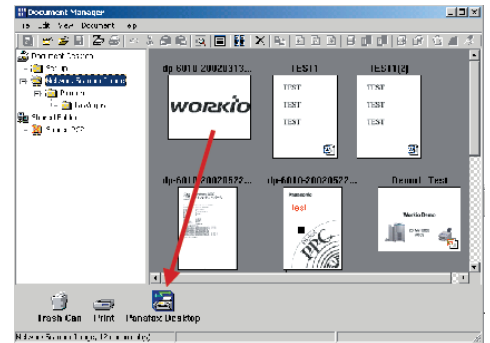


**Integration with Panasonic Document Management System**

Using the Panafax Desktop software in combination with the Panasonic Document Management System software puts a wide range of convenient and versatile functions at your fingertips.

**Send PC-FAX**

By registering the Panafax Desktop as a launch icon, you can automate faxing operations. Simply drop the target image file onto the Panafax Desktop icon to automatically launch the software and open a new message with the target image file attached.



**Requirements**

System	
Personal Computer	IBM PC/AT and compatibles (CPU Pentium II or greater)
Operating System	Microsoft Windows <sup>®</sup> 98/Me, Windows NT <sup>®</sup> 4.0 (With Service Pack 3 or later is required), Windows <sup>®</sup> 2000/XP
Memory	Memory recommended on each OS is 64MB or more (Windows <sup>®</sup> 98/Me) and 128MB or more (Windows <sup>®</sup> 2000/XP, Windows NT <sup>®</sup> 4.0).
Hard disk	40MB or more (Not including storage space of images for Image Overlay function).

**Requirement Software**

- Panafax Desktop (Included in the Panasonic Document Management System Software)

**Requirement Options**

- For DP-6020/4520/3520, DP-6010/4510/3510, DP-3010/2310
- Fax Communication Board (DA-FG600 or DA-FG300)
- Internet Fax/Email Module (DA-NF600)
- For DP-1820P/1820E
- G3 Fax (DA-FG180)
- Internet Fax (DA-NF180)

Applicable Models : DP-6020/4520/3520, DP-6010/4510/3510, DP-3010/2310, DP-1820P/1820E, UF-9000, DX-800, DX-2000

Microsoft<sup>®</sup>, Windows<sup>®</sup> and Windows NT<sup>®</sup> are registered trademarks of Microsoft Corporation. WORKIO<sup>®</sup> is a registered trademark of Matsushita Electric Industrial Co., Ltd. Design and specifications are subject to change without notice.



**Panasonic Digital Document Company**  
Unit of Matsushita Electric Corporation of America  
Two Panasonic Way, Secaucus, NJ 07094  
For a local dealer, please call 1-800-742-8086  
<http://www.panasonic.com/office>